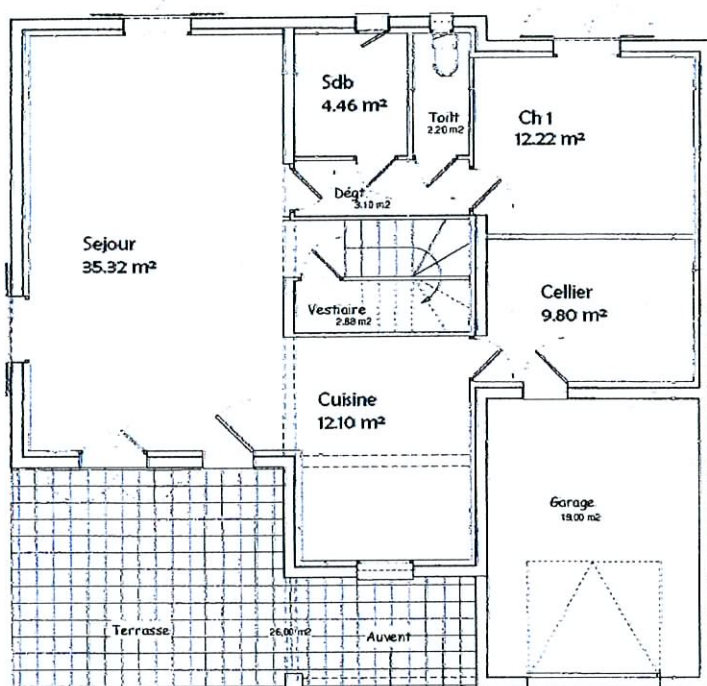
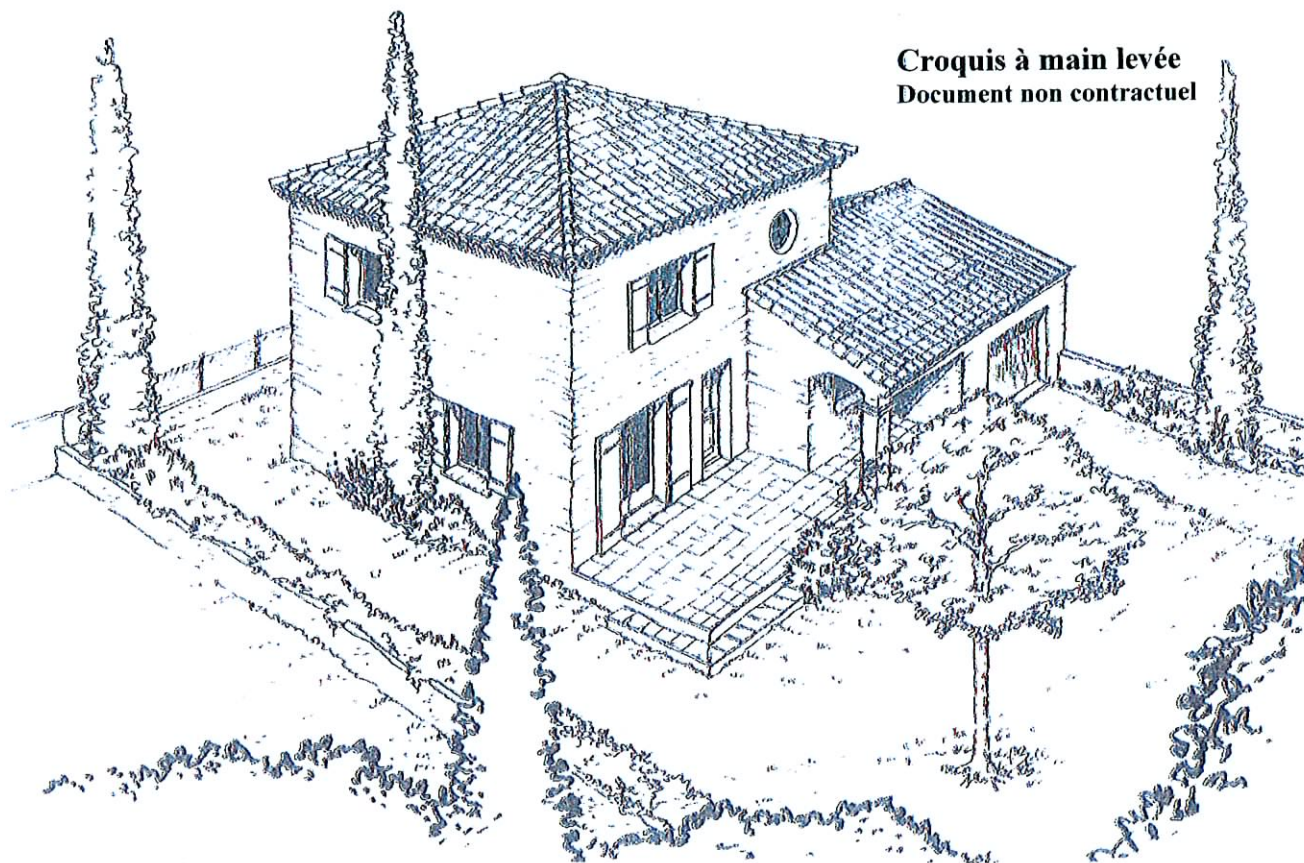
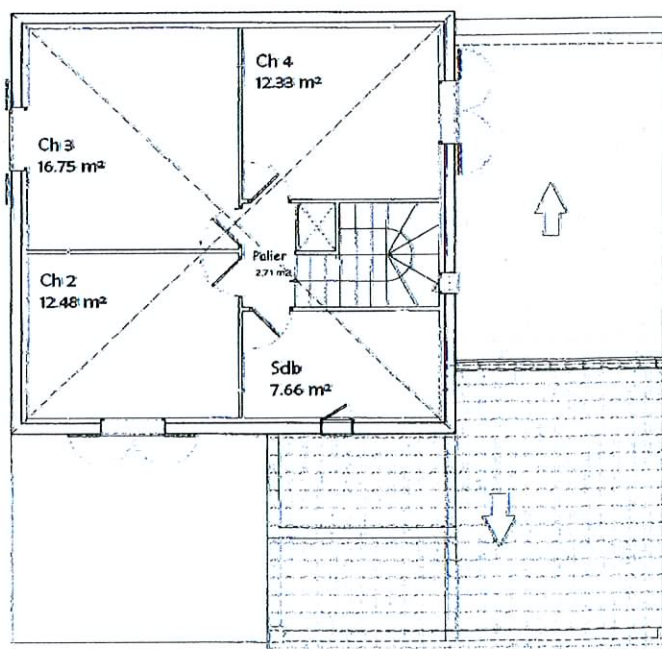


Croquis à main levée
Document non contractuel



TOTAL HABITABLE : 134 m²
Rez de chaussée : 82,10 m²
Etage : 51,90 m²
Garage : 19 m²
Cellier : 6,27 m²
Terrasse : 19,20 m²
Auvent : 16,80 m²



Projet du groupement D'artisans
Villa SCH 134 m²